



RUBBER LINING (THAILAND) CO., LTD.
Corrosion Protection



COMPANY PROFILE



Head Office
Bangkok



Factory No. 1
Tubma, Rayong



Factory No. 2
Mabka, Rayong



บริษัท รันเบอร์ ลอนิง (ประเทศไทย) จำกัด
RUBBER LINING (THAILAND) CO., LTD.
Corrosion Protection

Contents

1. Company Overview
2. Organization Chart
3. Business Line
4. Job Experiences
5. Certificate and honour

1. Company Overview

Rubber Lining (Thailand) Co., Ltd. is a specialized company producing and supplying anit-corrosion materials and works, an exciting and ever-growing material and work here and aboard.

Since we have established the company for over 20 years, seperated from one department of Surasak Engineering Limited Partnership which had been working in the engineering field for over 30 years, our company have tried to develop the new anti-corrosive method and upgrade our products and workmanship.

We have a full support from our partners from all over the world

1. Surasak Engineering Limited Partnership, Thailand (Steel Fabrication)
2. M.E.I Engineering and Construction Co., Ltd., Thailand (Steel Fabrication)
3. Coating & Lining Co., Ltd., Thailand (Teflon Coating & Lining)
4. KCH Group GmbH, Germany (Rubber, Polymer, Plastic, & Brick)
5. KCH (Wuhan) Co., Ltd., China (Rubber, Polymer, & Brick)
6. Rema TipTop International, Germany (Rubber & Polymer)
7. Eclatin, Switzerland (Polyurethane Coating & Lining)
8. Envirotrol, USA (Ceramic Cover CC-100, Insulation Coating)
9. Covalence Corrosion Protection, USA (Polyken Tape)

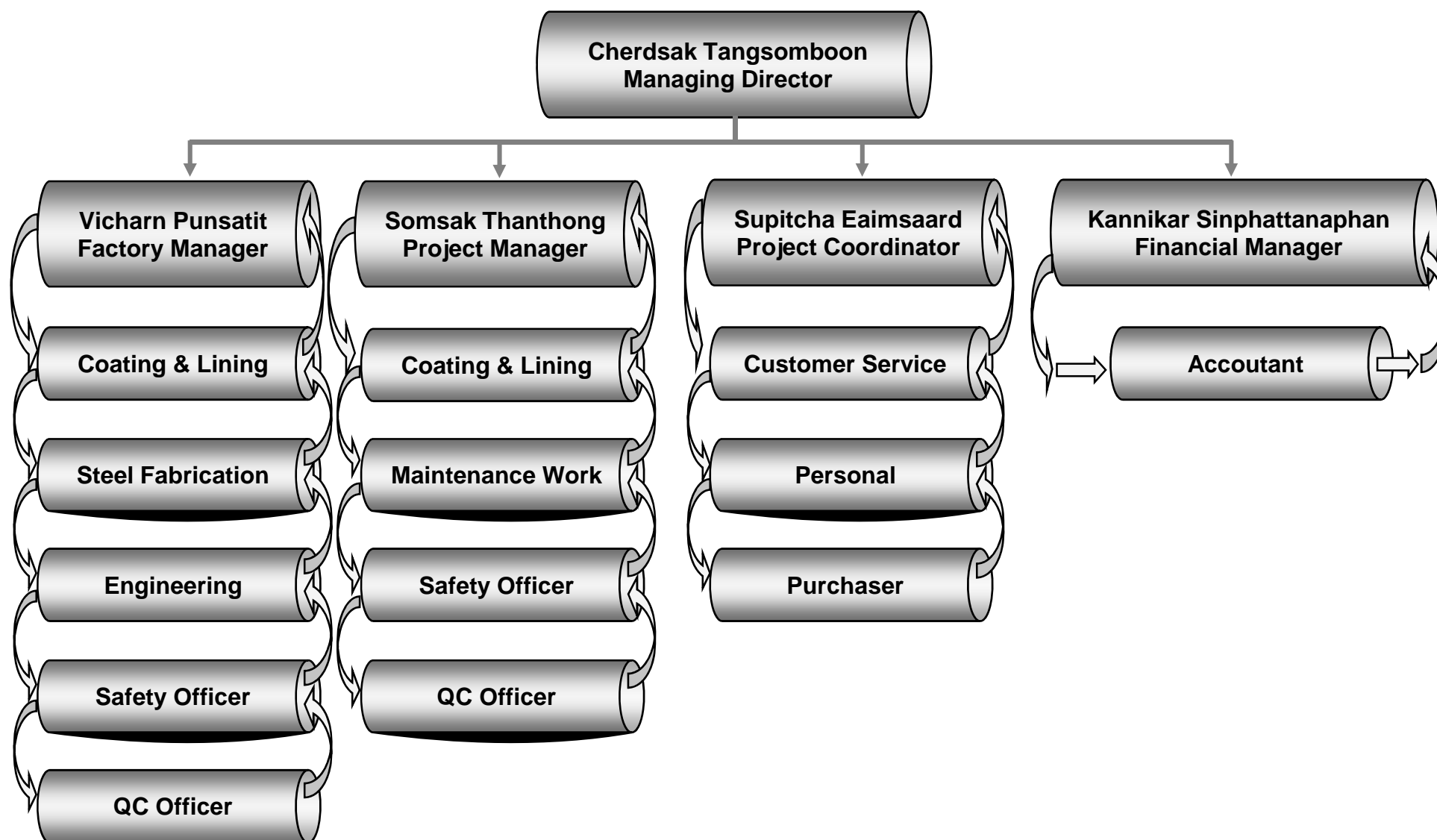
We are specialized in protecting the Tankage, Piping, Structure and etc. from the corrosion and abrasion. Our business is to provide our customer the best solution for workshop and jobsite services which including supply, service, and maintenace. Our effort is to improve the quality and keeping the valuable schedule time of our valuable customer.

Head Office: 1000/3 Benjamasree Village, Tork Wadjanat, Rateladapisek Rd., Bangkok, Bangkok 10120, Thailand.

Factory 1: 38/3 Moo 8, Highway 26, Bangna-Trad Road, Tohna, Muang, Rayong 21000, Thailand

Factory 2: 87/1 Moo 5, Nikompatana Sai 9 Rd., Mapkha, Nikompatana, Rayong 21180, Thailand

2. Organization Chart



3. Business Line

3.1. Rubber Lining Work is one of our major business since we established our company. Our company provide only the best rubber materials and adhesives from Germany because our customers deserve only the best quality of materials and workmanships to reduce their valuable time lost and high cost of break down time. We provide three different kinds of rubber materials which are workshop rubber, onsite rubber, and abrasion resistant rubber.



With the high technology of German products, **workshop rubber** such as hard rubber with ebonite filled or graphite filled are our major products for pipe and small tanks. We also provide the rubber which can be resist to the chemicals and abrasion in the same time for slurry piping and tank.



Onsite Rubber from Germany is the most advance technology for rubber lining work in this year. We are using the extruding system in stead of calendering to sheet out the rubber sheet in this system to avoid the air trap in the rubber sheet. Onsite rubber sheet is a pre-vulcanized rubber and using cold apply system, so no need to do vulcanization at jobsite to avoid the air bubble after curing.



High abrasive resistant rubber is one of our specialty. We supply and install all the equipment parts which need to be resist from the high abrasion including hopper, pipe, structure, etc.

Our imported material is a top five of the high range of the best quality product in the world and our trained applicator, they know how to apply this pre-vulcanized rubber with cold apply system as the best applicator from the manufacturer.

3.2. Painting Work



Painting work at our Rayong plant is one of the most advance auto-blasting machine for pipe, fitting, tank, and steel structure. We have the largest Grit Blasting Chamber in the Region. At our painting shop, we are also taking care of the environment by install the dust collector in every machine. In every step of work, we will do the inspection according to our customer requirement and keep our best quality.



Painting work at job site is our specialty which we can provide onsite blasting and painting work including Tank, Pipe, Steel Structure, Etc. We are a capable sub-contractor for painting work which we can provide full range of services and supply of materials from any paint manufacturer locally and oversea. Our annual capacity for blasting & painting work is approx. 800,000 m2 based on our past experiences.

3.3. Tape Wrapping Work for Underground Pipeline



We are an exclusive agent for Covalence Corrosion Protection Group for the brand name of [POLYKEN](#) Tape which is the most specify materials to use worldwide. We also do a very high performance for wrapping application and we also using the latest machine for PE Tape Wrapping for most pipeline contractor.

3.4. Cement Mortar Lining



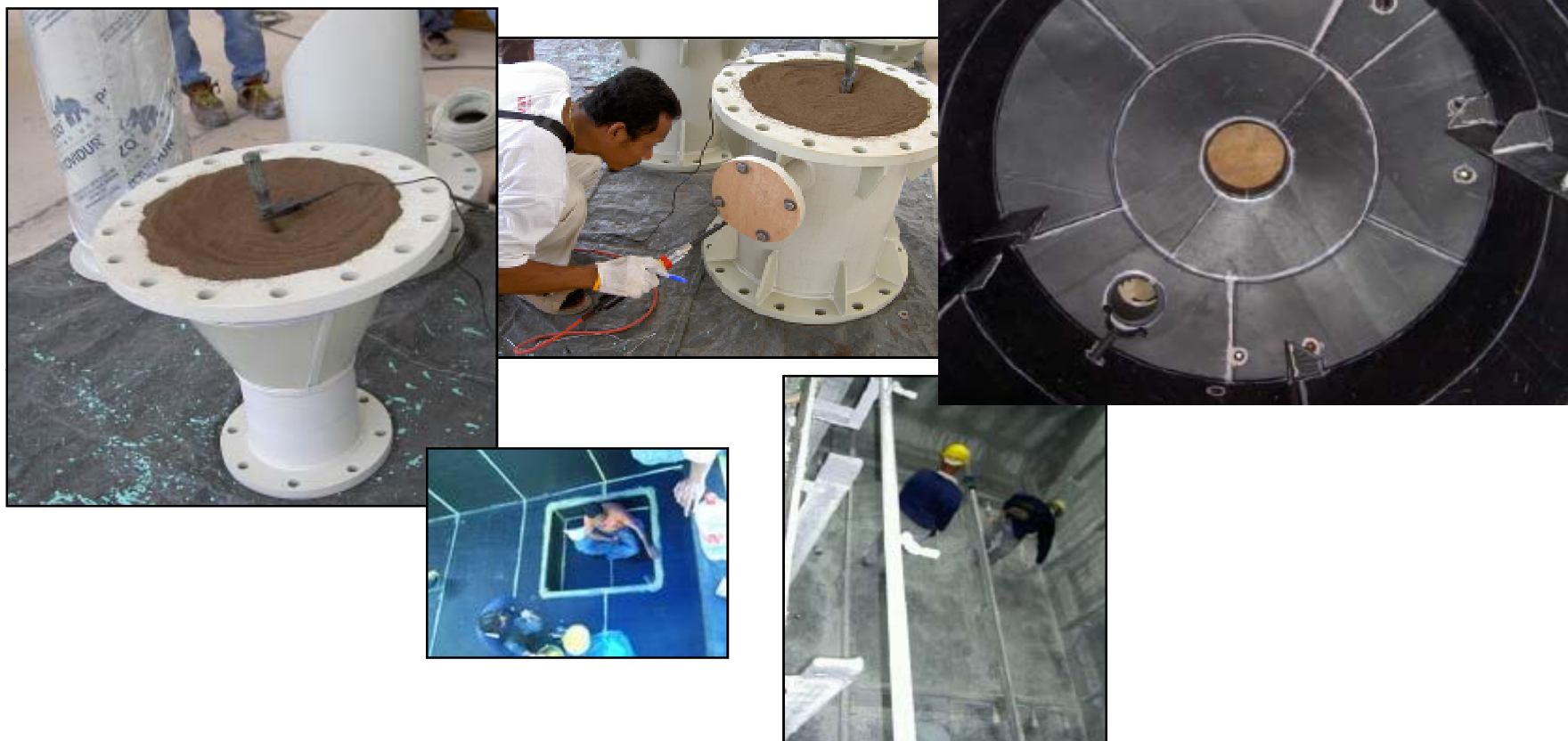
Internal Cement Mortar Lining is one of our specialty and we have worked on the field for over 15 years. We have been approved by Esso Standard Thailand and others oil refinery plant in Thailand for many years and they specified this cement mortar lining for seawater to use for fire fighting pipeline. We can do according to the several standard such as AWWA, Shell, and etc.

3.5. Internal Polymer & Epoxy Lining



Polymer & Epoxy Lining Work, the technology of this kind of lining is improving and more advance of the application. We have started this business 10 years ago and we found that in the future this polymer and epoxy will be replace the older technology such as rubber for acid proof lining business.

3.6. Plastic Coating, Lining, & fabrication



Since 1996, we have started the soft PVC lining for the acid cleaning tank for many factory plant in Thailand. From that time, we have increased our business line from only soft PVC lining to PE, PP, PVC, & PTFE including the method of application for Coating, Lining, & Fabrication. We are using local materials and imported materials from many countries depending on the availability. Our trained applicator are high performance applicator which mostly trained from oversea.

3.7. Brick & Tile Lining



Ceramic, Carbon, & Granite is the best materials to make brick & tile for industrial use to resist the high temperature which other membranes cannot handle. This brick & tile lining work are usually line on top of the membrane and the thickness of brick or tile depending on the temperature inside the equipment. It can be the range from 15 mm. to 500 mm. (many layers). Brick & Tile Lining join by the special mortar depending on which type of acid, concentration, and temperature. We are imported the Ceramic brick and all the mortar from KCH Germany and carbon brick from China which approved the quality by KCH Germany.

STEEL & STAINLESS STEEL FABRICATION & INSTALLATION

3.8. Field Fabrication







LOCATION : NAKORN RATCHASIMA
CONTRACTOR : PROMJAI ENGINEERING CO., LTD.
PROJECT : NIC STARCH
DIMENSION : DIAMETER 600 X 3050 mm.
MATERIAL : SS - 400 + SUS - 304
MANUFACTURED : MAY ' 98
TITLE : HEAT EXCHANGER TANK



LOCATION : EASTERN INDUSTRIAL ESTATE
CONTRACTOR : THAI SEMCON CO., LTD.
OWNER : ARAKAWA CHEMICAL
DIMENSION : DIAMETER 4000 X 7970H MM.
MATERIAL : SUS - 304
MANUFACTURED : DEC ' 00
TITLE : STORAGE TANK



LOCATION : RAYONG
CONTRACTOR : SUMISETSU (THAILAND) CO., LTD..
PROJECT : DC SILO
DIMENSION : DIAMETER 2000 X 9500 mm.
MATERIAL : SUS - 304
MANUFACTURED : DEC ' 99



OWNER : TOSTEM (THAILAND) CO., LTD.
LOCATION : NAVANKORN INDUSTRIES ESTATE
CONTRACTOR : THAI SEMCON CO., LTD.
PROJECT : STORAGE TANK
DIMENSION : DIAMETER 3600 X 7620 mm.
MATERIAL : SUS - 304
MANUFACTURED : MAY ' 00



OWNER : THAI KRAFT PAPER INDUSTRY CO., LTD.
LOCATION : BANPONG
CONTRACTOR : VOITH IHI PAPER TECHNOLOGY CO.,LTD.
PROJECT : PM # 1 RENOVATION
TITLE : WINDER TRIM PULPER
 : PRESS PIT
 : PRESS PIT PULPER
DIMENSION : -
MATERIAL : SUS - 304
MANUFACTURED : APRIL ' 05





CONTRACTOR : AJINOMOTO ENGINEERING 2001 (THAILAND) CO., LTD.

PROJECT : AROMA OIL TANK

MATERIAL : SS-400 / SUS-304

MANUFACTURED : MAY ' 06



OWNER : TSK ENGINEERING (THAILAND) CO.,LTD.
TITLE : FLUIDIZED BED DRYER
DIMENSION : 3800W x 12000L x 5050H mm.
MATERIAL : SUS - 304 / 304L
MANUFACTURED : FEBRUARY 2007



OWNER : AJINOMOTO CO., (THAILAND) LTD.
LOCATION : PRATHUM THANI FACTORY.
TITLE : PIPING CTW SB OF COOLING
TOWER
MATERIAL : SS-400
MANUFACTURED : JANUARY '07



OWNER : AJINOMOTO CO., (THAILAND) LTD.
LOCATION : PRATHUM THANI FACTORY.
TITLE : CLEANING SPIRAL & PIPING WORK
LINE 3B
MATERIAL : SS-400 + SUS-304
MANUFACTURED : JANUARY '07



OWNER : AJINOMOTO CO. (THAILAND) LTD.
LOCATION : PRATHUM THANI FACTORY.
TITLE : TAKE OFF & RESETTNG PIPE 6B, 8B, 10B
OF FFE TANK
MATERIAL : SUS-304
MANUFACTURED : FEBRUARY '07



OWNER : TSK ENGINEERING (THAILAND) CO.,LTD.
TITLE : DISTILLATION COLUMN REBOILER
DIMENSION : \varnothing 750 x 4000 mm.
MATERIAL : SUS - 304
MANUFACTURED : MAY '07



OWNER : AJINOMOTO CO., (THAILAND) LTD.
LOCATION : KAMPHAENG PHET FACTORY.
CONTRACTOR : AET MANUFACTURING CO., LTD.
TITLE : I-G CRYSTALLIZER A, B
DIMENSION : ϕ 3350 x 4202 mm.
MATERIAL : SS - 400
MANUFACTURED : JULY '07

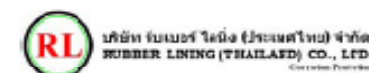


OWNER : MC-TOWA INTERNATIONAL SWEETENERS CO., LTD.
LOCATION : HUAY PONG, RAYONG
TITLE : FOUNDATION / STORAGE TANK / PIPING WORK
DIMENSION : ϕ 6,000 x 11,000 mm.
MATERIAL : SUS-304
MANUFACTURED : MARCH '08



OWNER : COCO PUBLIC CO., LTD.
PROJECT : THE CO - GENERATION PLANT
LOCATION : MAPTAPUD INDUSTRIAL ESTATE
CONTRACTOR : THAISEI CO., LTD.
TITLE : PIPE RACK
WEIGHT : 870 TONS.
MANUFACTURED : FAB ' 96

4. Job Experiences



SOME OF EXPERIENCE LIST

DISCIPLINE: PAINTING, RUBBER LINING, PE TAPE WRAPPING

PROJECT NAME	END USER	PRIME CONTRACTOR (BIDDER'S CLIENT)	LOCATION	CATEGORY OF WORK	CONTRACT		YEAR COMPLETED	MOBILIZED PEAK MANPOWER (MANDAY/DAY)	WORK VOLUME
					TYPE	VALUE (US\$)			
THAI PAPER EXPANSION 1	THAI PAPER	TIESCO	RATCHASURI	PAINTING WORK	UNIT RATE	1.17 MILLIONS	1995	68	120,300 M2
PAK TAI PETROLEUM TERMINAL	PAK TAI PETROLEUM	SKEC	SAMUTSAKORN	PAINTING WORK	UNIT RATE	0.39 MILLIONS	1995	30	22,300 M2
STORAGE TANKS	SURA MAHALART	SURA MAHALART CO., LTD.	PRATHUMTHANEE	PAINTING WORK	LS	0.21 MILLIONS	1996	22	11,300 M2
WARE HOUSE EXPANSION	LEVER BROTHER	TIESCO	CHOLBURI	PAINTING WORK	UNIT RATE	0.42 MILLIONS	1996	26	52,300 M2
TPILUBE BASE OIL	TPI	LG ENGINEERING CO., LTD.	RAYONG	PAINTING WORK	UNIT RATE	1.20 MILLIONS	1996	140	180,300 M2
TPIEBSM	TPI	LG ENGINEERING CO., LTD.	RAYONG	PAINTING WORK	UNIT RATE	0.25 MILLIONS	1996	60	23,300 M2
GYPSUM PRODUCTION	SIAM CEMENT GROUP	TIESCO	SARABURI	PAINTING WORK	UNIT RATE	0.32 MILLIONS	1997	22	28,300 M2
TPC EXPANSION	TPC	TIESCO	RAYONG	PAINTING WORK	UNIT RATE	0.13 MILLIONS	1997	15	15,300 M2
NPC EXPANSION	NPC	TIESCO	RAYONG	PAINTING WORK	UNIT RATE	0.26 MILLIONS	1998	42	33,300 M2
CDT	SIAM CEMENT GROUP	TIESCO	RAYONG	PAINTING WORK	UNIT RATE	0.27 MILLIONS	1999	39	46,300 M2
UMC PHASE 2	JMC	TIESCO	CHOLBURI	PAINTING WORK	UNIT RATE	1.08 MILLIONS	2000	62	85,300 M2
EGAT MAE MOH "FGD UNIT 4-7"	EGAT	KCH GMBH, GERMANY	LUMPANG	RUBBER LINING	LS	2.32 MILLIONS	2001	56	2,250 M2
EGAT KRAEI FGD UNIT	EGAT	TOYO-THAI ENGINEERING	KRAEI	RUBBER LINING	LS	0.38 MILLIONS	2002	18	380 M2
PHA LAI POWER PLANT, VIETNAM	EGAV	HYUNDAI ENG. & CONST.	VIETNAM	RUBBER LINING	LS	0.67 MILLIONS	2002	32	1,300 M2
LXML COPPER, LOAS	LXML	DSB SAUREBAU, GERMANY	PR. LOAS	RUBBER LINING	LS	0.55 MILLIONS	2004	28	1,450 M2
SUWANNABHUMI AIRPORT	AOT	TIESCO	SAMUTPRAKARN	PAINTING WORK	UNIT RATE	0.29 MILLIONS	2004	20	24,300 M2
GAS SEPERATION #5 PLANT	PTT	SAMSUNG ENGINEERING	RAYONG	PAINTING WORK	UNIT RATE	0.79 MILLIONS	2004	80	33,300 M2
UREA FERTILIZER, BANGLADESH	NPC, BANGLADESH	TOYO-THAI ENGINEERING	BANGLADESH	RUBBER LINING	LS	1.22 MILLIONS	2005	35	4,500 M2
SIAM TYRE PHASE 2	SIAM CEMENT GROUP	TIESCO	KAMPANGPET	PAINTING WORK	UNIT RATE	0.75 MILLIONS	2005	45	62,300 M2
BLCP	BLCP	VIPCO	RAYONG	PE TAPE WRAPPING	UNIT RATE	0.42 MILLIONS	2005	25	8,500 M2
BEER CHANG EXPANSION 2	BEER THAI 1991	TIESCO	KAMPANGPET	PAINTING WORK	UNIT RATE	1.44 MILLIONS	2006	60	160,300 M2
SIAM MALAYA GLASS	SIAM CEMENT GROUP	TIESCO	SARABURI	PAINTING WORK	UNIT RATE	0.36 MILLIONS	2007	35	46,300 M2
SIAM LAMMERZ	SIAM CEMENT GROUP	TIESCO	CHOLBURI	PAINTING WORK	UNIT RATE	0.47 MILLIONS	2007	50	35,300 M2
THAI GLASS INDUSTRY	THAI GLASS INDUSTRY	TIESCO	SAMUTPRAKARN	PAINTING WORK	UNIT RATE	0.53 MILLIONS	2007	44	32,300 M2
PTT-PE	PTT	TOYO-THAI ENGINEERING	RAYONG	PE TAPE WRAPPING	UNIT RATE	0.38 MILLIONS	2007	22	3,300 M2
ATC#2	ATC	SKEC & GSEC	RAYONG	PAINTING WORK	LS	6.84 MILLIONS	2008	458	280,300 M2
MOC CRACKER PROJECT	SIAM CEMENT GROUP	SAMSUNG ENGINEERING	RAYONG	PAINTING WORK	LS	2.23 MILLIONS	2009	180	160,300 M2
GAS SEPERATION #6 PLANT	PTT	SAMSUNG ENGINEERING	RAYONG	PAINTING WORK	LS	3.56 MILLIONS	2009	340	220,300 M2
MAPTAPHUT TANK TERMINAL	SIAM CEMENT GROUP	CHIELE&C	RAYONG	PAINTING WORK	LS	0.67 MILLIONS	2009	60	60,300 M2
ETC.									



ATC REFORMER AND AROMATICS COMPLEX II PROJECT, RAYONG, THAILAND

5. Certificate and Honour







SKEC (Thai) Limited
Unit 2702, 27th floor, Two Pacific Place
142 Sukhumvit Road, Klongtoey, Bangkok 10110
Thailand
Tel: 66-2-254-7211-4 Fax: 66-2-254-7215

Our Ref.: CPX2/C/SKT/SUB/L- 0413

To: RUBBER LINING (THAILAND) CO., LTD.

Attention: Mr. Cherdasak T/ Managing Director
Project: The Reformer and Aromatics Complex II Project
Contract No. : 19869-SK-SC-PA-001

September 20, 2007

TO WHOM IT MAY CONCERN

This is to certify that Rubber Lining (Thailand) Co., Ltd. has been subcontractor of SK Engineering & Construction Co., Ltd. for Blasting, Prime coating and Final painting of piping and equipment for the ATC # 2 (Reformer and Aromatics Complex II) project from September 21, 2007 to March 31, 2008.

The Contract lump sum amount is 44,544,000 Thai Baht.

We hereby confirm the performance of Rubber Lining (Thailand) Co., Ltd. is satisfactory and we recommend this company for any similar construction activity.

Sincerely Yours

Sung In, Lee
Construction Manager
REFORMER AND AROMATICS COMPLEX II PROJECT
SKEC (Thai)





